



Apple TV

OzarksGo TV App Installation

To add OzarksGo TV to your Apple TV:

- ✓ Go to the **App store**.
- ✓ Use the on-screen keyboard to type in '**OzarksGo TV**'.
- ✓ **Download** like you would any other app.
- ✓ From your Apple TV home screen, **OzarksGo TV** should display.
- ✓ The first time you open the App, you will be prompted for a **Login and Passphrase** that you received in your email.
- ✓ If you have not received this, **Contact Our Office** 1-866-569-2757.



Download the OzarksGo TV app



ozarks
go

1-866-569-2757

ozarksgo.net/support

Apple TV

OzarksGo TV User Guide

Controlling Your Remote

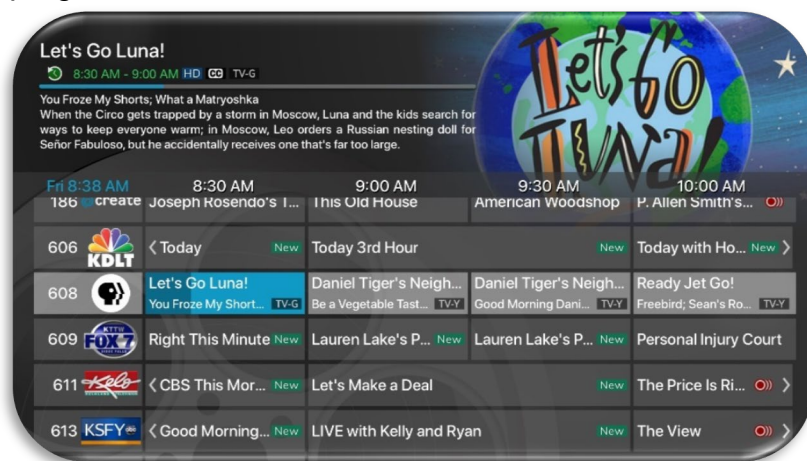
Pressing the Top, Bottom, Left, or Right edges on your remote ring will highlight different actions in the Guide; Recording, Search, and Settings options. Pressing on center of the remote will open the highlighted option. Press the Back button to move back to the previous screen or to open the Tab Bar. To return to the Apple TV Home screen, press the TV/Control Center.



Watching Your OzarksGo TV App

From the Home Screen, highlight the OzarksGo TV App and press the center of your remote ring, this action will open your on-screen Program Guide.

To watch a channel, press up or down on the remote ring to any highlighted program and press the Play/Pause button to view the program.



Channel Surfing

While watching a currently airing program, press the top of the remote ring to view the next higher numbered channel. Press the bottom of the remote ring to view the next lower numbered channel.

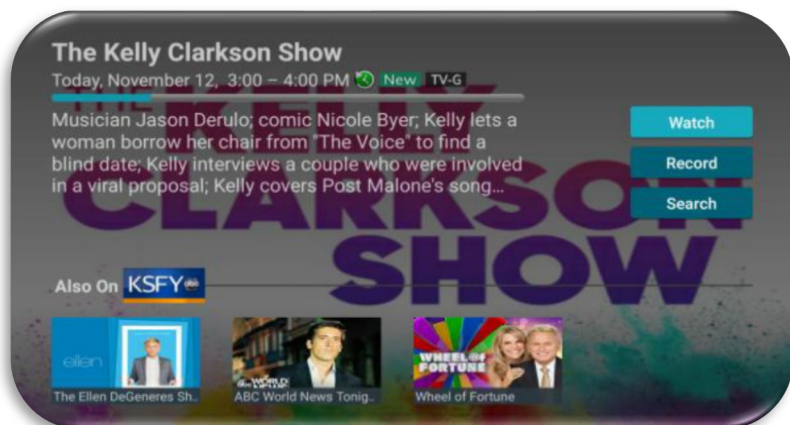
Jump to Channel Feature

From the Program Guide, press the center of your remote ring twice, a number screen will display that allows you to enter a specific channel number. Press the right or left side of the remote ring to highlight the channel number you want to watch, pressing the center of the remote ring to enter each number. Highlight Done and press the center of your remote ring to go to the selected channel. Press the Play/Pause button to watch the channel.



On-Screen Guide Management

From a live program that you are watching, press the Back button on your remote to open the on-screen Program Guide. Press Up, Down, Left or Right on your remote ring to scroll through your channel lineup. From a highlighted program, press the center of your remote to see detailed program information and your management options. The three options include Watch, for a currently airing program, Record, and Search.

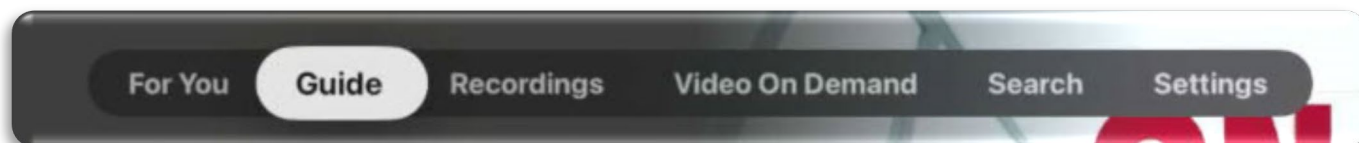


Recording Programs from the Guide

Select an upcoming or currently airing program, press the center of your remote, highlight the record button and press the center of your remote to make a recording of this program. See the Recording Your Programs section of this guide for more Recording instructions.

Tab Bar

From the Program Guide, press the Back button on your remote to open the Tab Bar. The Tab Bar allows you to scroll Left or Right to access the For You, Guide, Recordings, Video On Demand (If offered it will display), Search, and Settings options. Details on the Recording and Search options will be covered in later pages of this guide.



Adding New Devices to Your Service

Before you add a new device to this service, go to Settings in your Tab Bar from an activated device, and press the bottom of your remote ring until you have highlighted Devices. Continue to press down on your remote ring until you highlight the Blue + icon. Press the center of your remote ring to generate a Login and Passphrase for the new device. Follow the directions on the 'OzarksGo TV App Installation guide to add this service to your new Apple TV device and use the displayed Add Device Login and Passphrase when you are prompted to activate the service.



Recording Programs

Making a Recording

When you select Record from any on-screen option, a screen will display that gives you the options for setting a Recording Series Rule for this program. You can record a One-Time recording of this program, Series Rule only new episodes (New Only), Series Rule (All Episodes) of this program. Once you have made your selection, press the center of your remote ring and the recording is set. The Series Rules section will show how to manage your Series programs.



Watching Your Recordings

Recordings can be viewed from either the Recordings or Search screen options. Select Recordings from the Tab Bar to open the Recordings screen. Here you will see a list of your Current Recordings, Future Recordings, and Series Rules.



Scroll through Current, highlight the program you want to watch, and press the Play/Pause button to start watching the program.

If there are multiple recordings, scroll and highlight the one you want to watch and press the Play/Pause button to start watching the program.

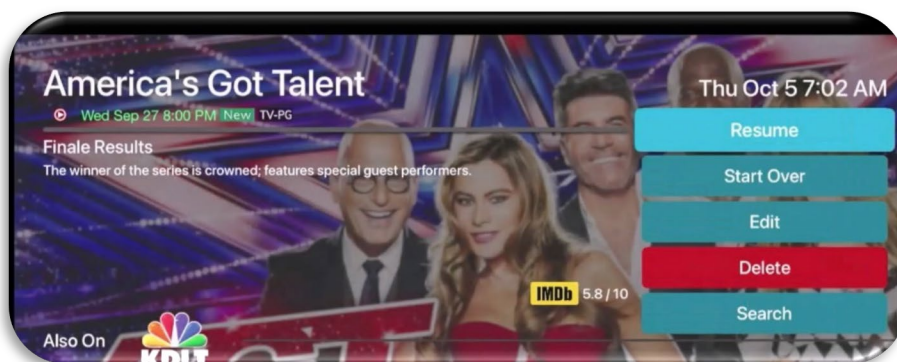
Managing Your Recordings

Current Recordings: Resume - Start Over – Edit – Delete - Search

From your list of current recordings, if you have started watching a program you have the options to Resume or Start Over, highlight your choice and press the center of your remote ring. The Edit feature will open your Series Rules option to be covered later in this guide.

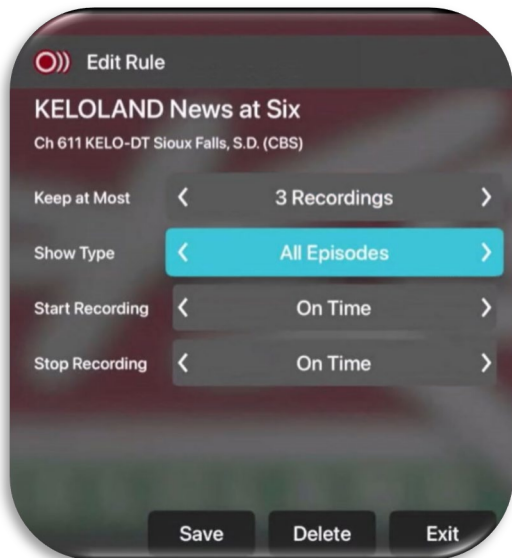
You can delete a recorded program by highlighting the Delete option. If you choose to Delete a program, you will receive a prompt asking if you are sure you want to delete the program.

The Search feature will display upcoming air dates of the live programs (on TV) and your Recordings for that program or series.



Manage Series Program Recordings with Series Rules

Use the Series Rules feature to manage the episodes of a series that you want recorded automatically. From the Recordings screen, press the bottom of your remote ring until you have highlighted Series Rules to see a list of series programs you have scheduled for recording.



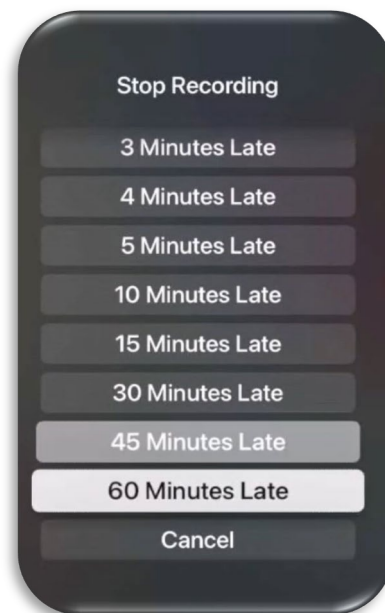
Scroll through the list and highlight a series that you want to manage. Press the center of your remote to open an Edit Rule screen.

Use your remote to navigate and select Keep at Most, the maximum number of episodes that you want to keep of this series. Show Type, which allows you to record All or Only New Episodes.

Start Recording or Stop Recording, allows you to manage in minutes the start or end times for the series recordings. This feature is particularly useful for sports events that can run past their scheduled end times. Highlight Save and press the center of your remote to save your Series Rules Edits.

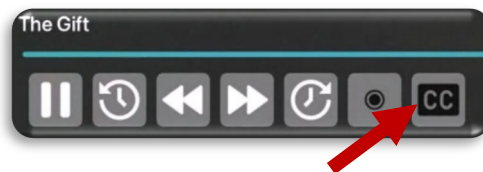


You can delete all the Series Rules for a program by highlighting the Delete button and pressing the center of your remote. This deletes any future recordings of this series but does not delete the existing Series Recordings.



Closed Captions

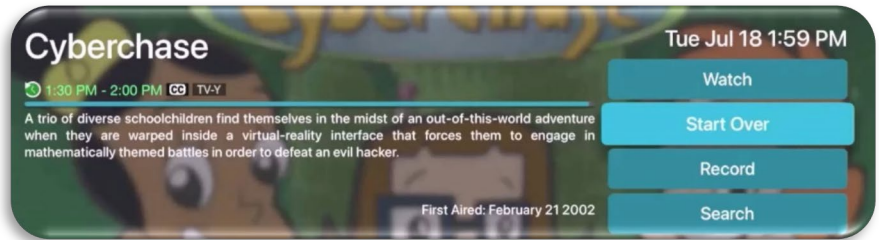
While watching live TV, press the center of your remote ring to open your control options, and then press the right side of your remote ring until you highlight the Closed-Caption icon, press the center of your remote ring to enable Closed Captioning. Follow the same procedure to turn Closed Captions Off.





This popular feature lets you go back to the beginning of any currently-airing or in-progress recorded program that has the Restart Option. Programs that have the Restart option display a Green Restart icon in the program description.

From the Program Guide, highlight a currently airing program and press the center of your remote ring. Press the top or bottom of your remote ring until you have highlighted Start Over, press the center of your remote ring and the program will Restart from the beginning.

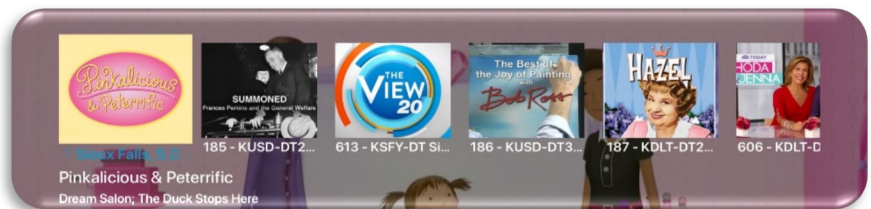


Pause Live TV

Life happens and there may be times when you need to take care of something while watching your favorite program. While watching live TV, press the Play/Pause button on your remote once to pause the program. To continue watching, press the Play/Pause button once.

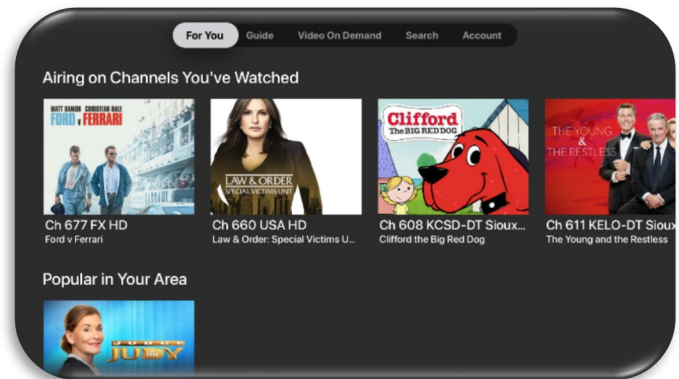
Quick Guide

During a live program swipe down on the center of your remote ring to pull down the menu list of your most recently watched channels. Press left or right on the remote ring to choose a new channel and press the center of your remote ring to watch it.



For You

If you prefer a poster view format instead of a traditional Channel Guide look, For You gives you quick access to Channels You've Watched, Channels Popular in Your Area, Recordings, and even the Weather. From the Program Guide, press the Back button on the remote to open the Tab bar, and press the left side of the remote ring to select the For You Option. Use your remote ring to navigate through and select what you would like to watch or record.



Fast Forward and Rewind Features

There may be times when you want to go back and see that exciting play in the game. To use this feature during an in-progress or recorded program, press the center of your remote ring to open your control options. Press the top of the remote ring to highlight the progress bar.

To rewind, tap the left side of the remote ring. To fast forward tap the right side of the remote ring. For quicker response swipe across the center of the remote ring left or right. The Progress Bar lets you track your movement through a program, and the timer helps you to see how far you are from the end of the program.



Program Search Feature

You can use the Search feature to find Live, Recorded, and Future programs. Highlight and select Search to open the program search pad. Use your remote ring to navigate Left or Right and press the center of your remote ring to highlight letters that correspond with the program you are searching for to see the results. You can also use the voice activation feature by holding the Microphone button and clearly saying the name of the program that you are searching for. **Note:** To use the microphone, Dictation mode must be activated in your Apple TV General Settings.

The results will be more specific if you type in or pronounce more letters in the name of the program. You can also use the search feature to find specific types of programs, like a program with the name "Today" in the title.

To view your search results, highlight the program and press the center of your remote ring.

The search results will show currently airing, recorded, or upcoming programs. Highlight a program and press the right side of your remote ring to highlight Watch, Record, or Delete and then press the center of the remote ring to make your selection.

